

FOR LEASE > OFFICE SPACE



# Palm Valley Office Park III

1626 N. LITCHFIELD RD. GOODYEAR, AZ 85395

**PRIME GROUND FLOOR  
LOBBY EXPOSURE**



## Palm Valley Office Park III > For Lease

Suite 110: ±6,357 RSF

Lease Rate: \$26.00/SF

Suite 260: ±2,342 RSF

Parking Ratio: 4.30/1,000 SF

Suite 280: ±1,421 SF

## Property Features

- > Situated at the gateway to the Palm Valley master-planned community
- > Restaurants, retail, banks and theaters in the immediate area
- > One minute from I-10
- > Twenty minutes from downtown Phoenix



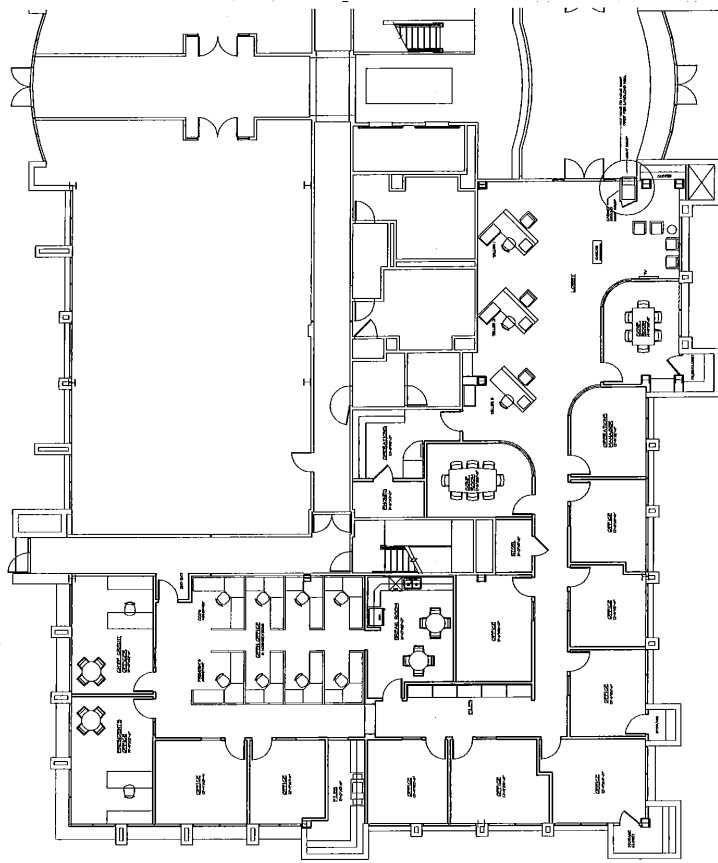
Managed by:



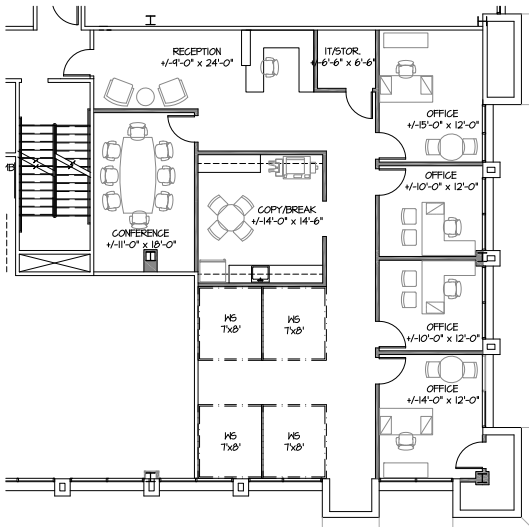
TYLER SMITH  
602 222 5095  
PHOENIX, AZ  
tyler.smith@colliers.com

COLLIERS INTERNATIONAL  
2390 E. Camelback Rd, Suite 100  
Phoenix, AZ 85016  
www.colliers.com/greaterphoenix

# Palm Valley Office Park III > Floor Plan

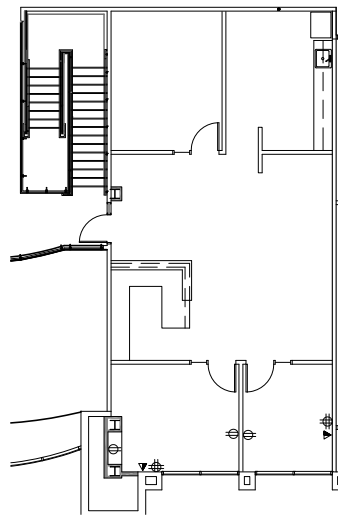


SUITE 110: ±6,357 RSF

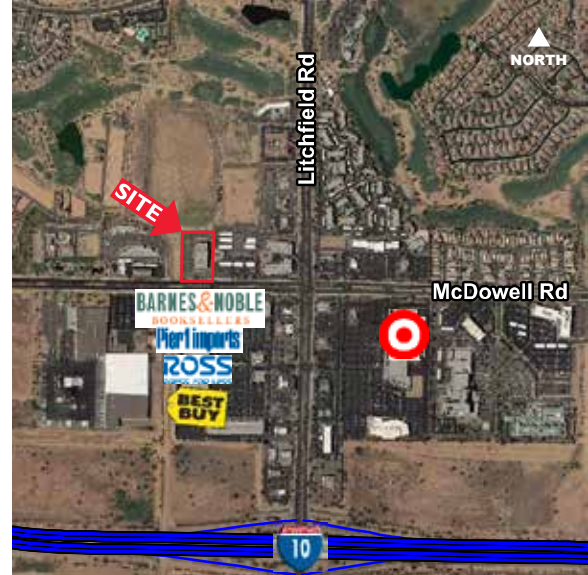


SUITE 260: ±2,342 RSF (SHELL CONDITION)

\*Hypothetical layout shown



SUITE 280: ±1,421 SF



## Contact Us

TYLER SMITH  
 602 222 5095  
 PHOENIX, AZ  
[tyler.smith@colliers.com](mailto:tyler.smith@colliers.com)

COLLIERS INTERNATIONAL  
 2390 E. Camelback Rd, Suite 100  
 Phoenix, AZ 85016  
[www.colliers.com/greaterphoenix](http://www.colliers.com/greaterphoenix)

